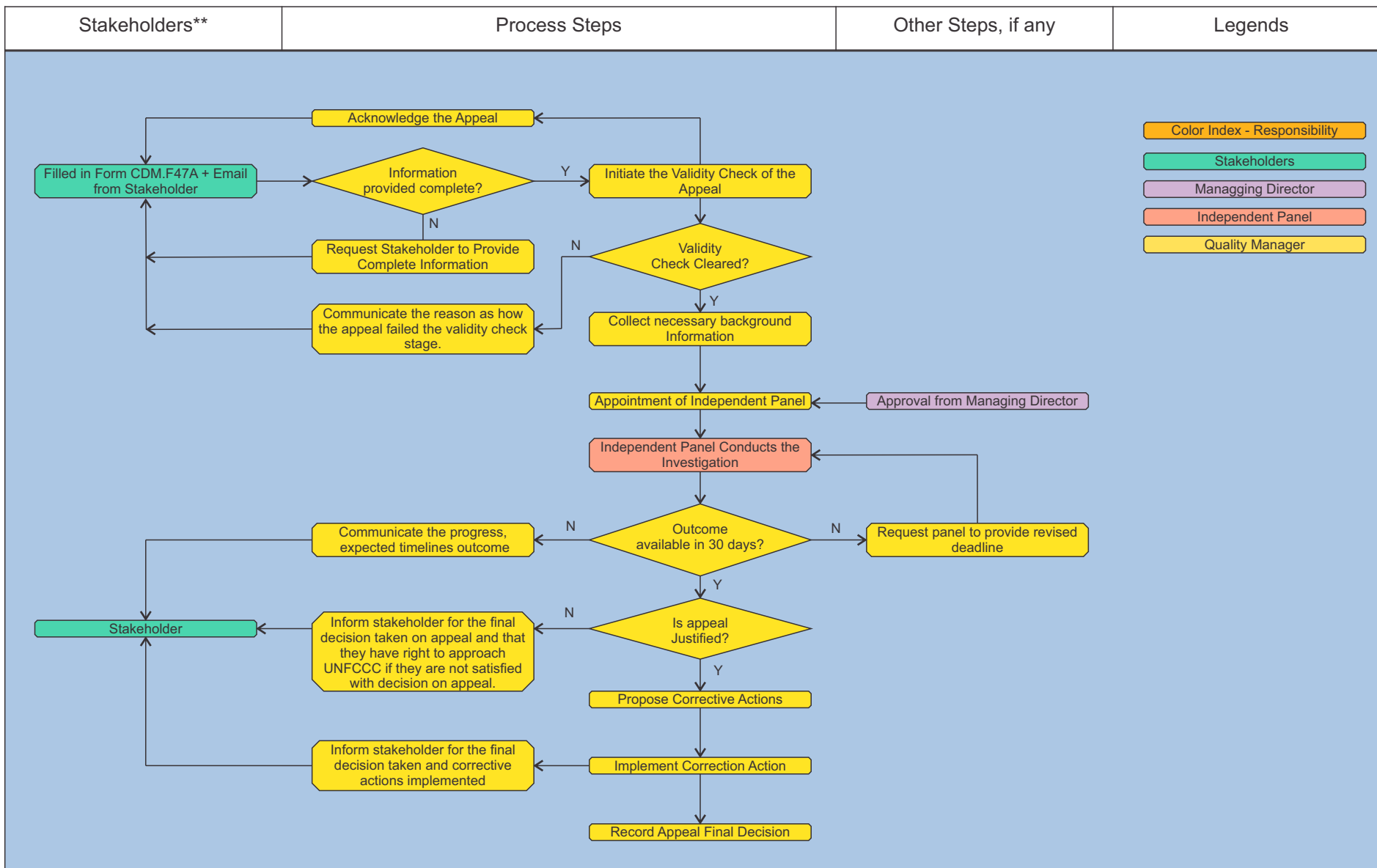


CDM Appeal* (Validation/Verification Services) Handling Process at ESPL Flow Chart



Disclaimer: The information presented here is current to the best of our knowledge. However, we do not undertake any responsibility on its use. The information is liable to change/modification/removal at our discretion due to internal procedures. The information and this document can be freely downloaded, circulated without altering the content in any manner.

*Appeal: A request made by client for formal review of a decision taken by ESPL in respect of its validation and/or verification/certification activities.

**CDM PP/CME or their authorized representative, which must have a valid CDM validation/verification service agreement with ESPL.

**Form F47.A is also available at www.earthood.in. Stakeholder is recommended to provide the filled in the Form